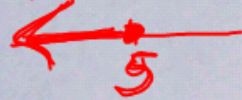


Quiz

① Solve for x and graph solution on a number line.

$+2$
 $+1$
 $+0$
① $3x + 7 \leq 22$
 -7 -7



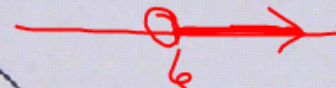
$$\frac{3x}{3} \leq \frac{15}{3}$$

$$x \leq 5$$

② $4x - 3 \geq 21$
 $+3$ $+3$

$$\frac{4x}{4} \geq \frac{24}{4}$$

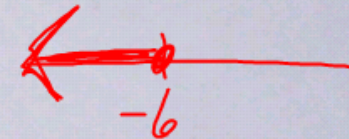
$$x \geq 6$$



③ $5 - 2x \geq 17$
 -5 -5

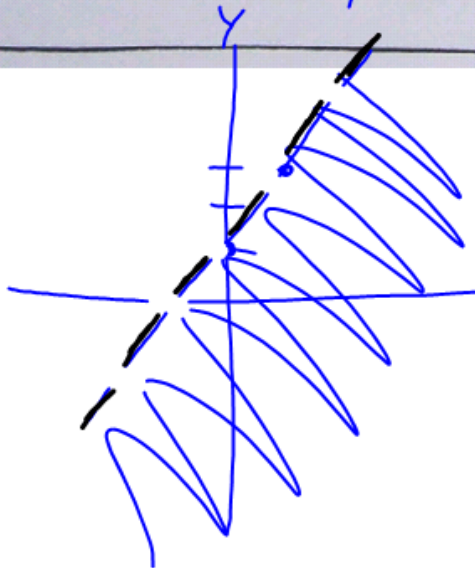
$$\frac{-2x}{-2} \geq \frac{12}{-2}$$

$$x \leq -6$$



② Graph the inequality.

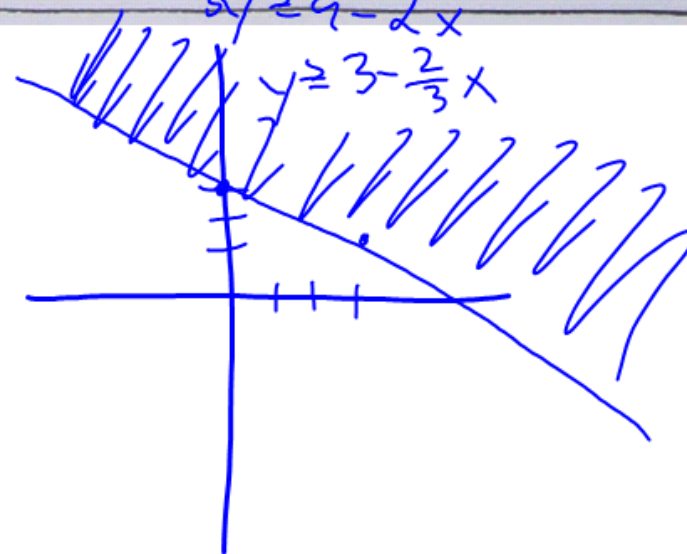
① $y < 2x + 1$
 y -int



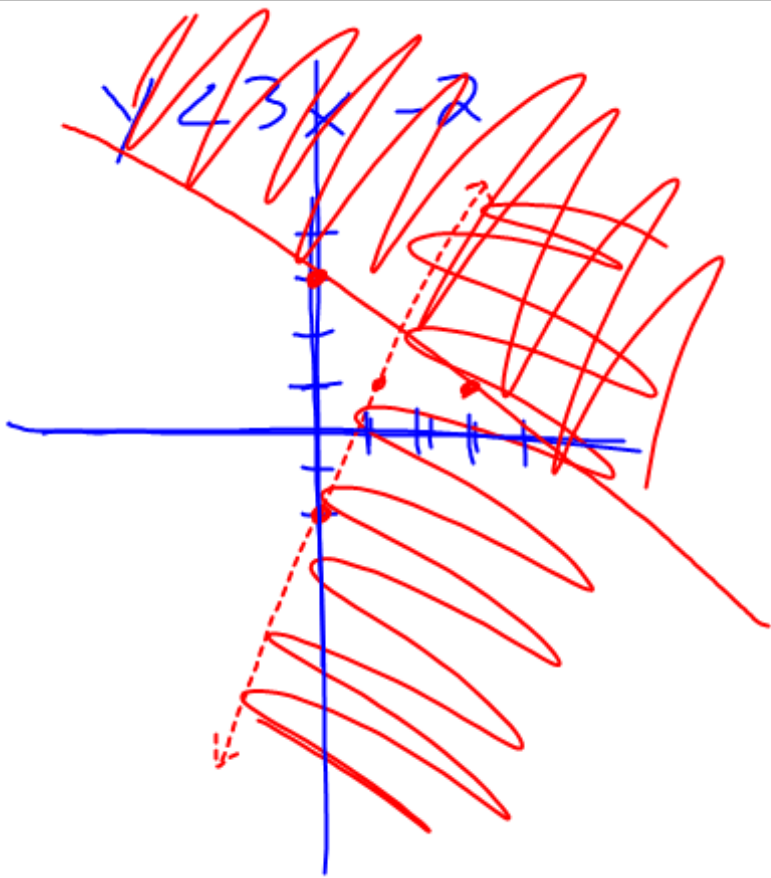
② $2x + 3y \geq 9$
 $-2x$ $-2x$

$$3y \geq 9 - 2x$$

$$y \geq 3 - \frac{2}{3}x$$

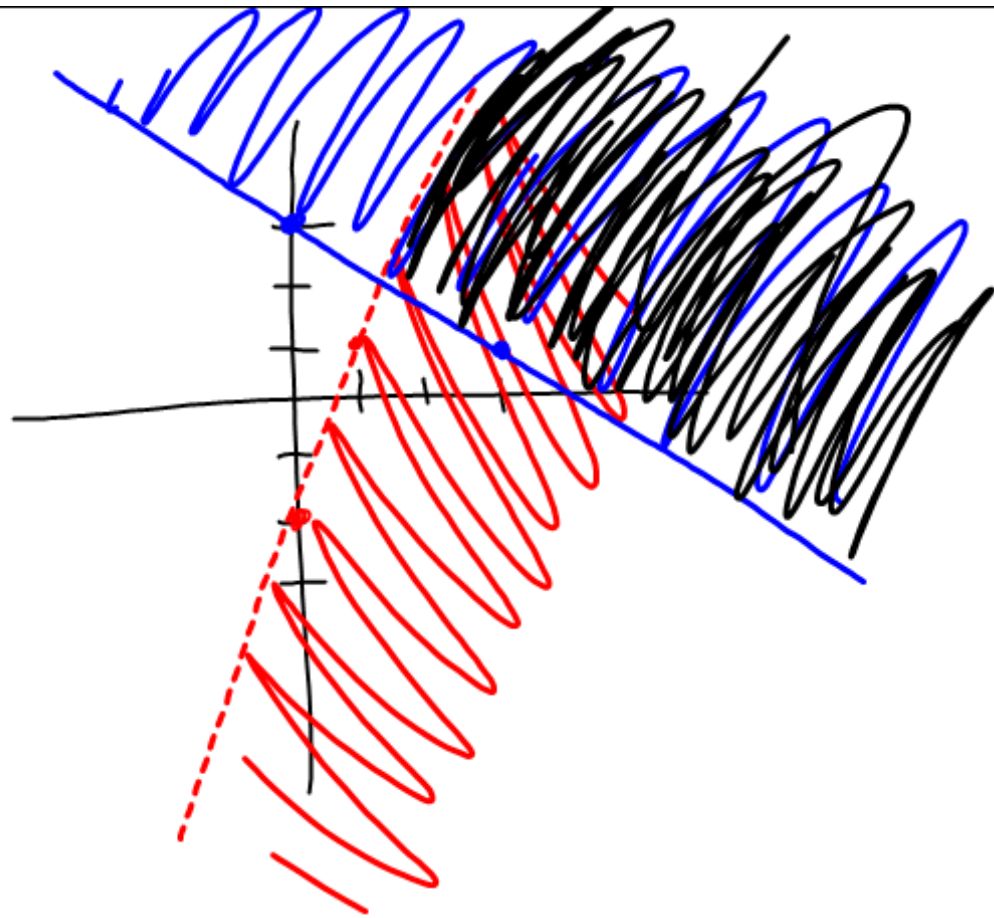


$$y \geq -\frac{2}{3}x + 3$$



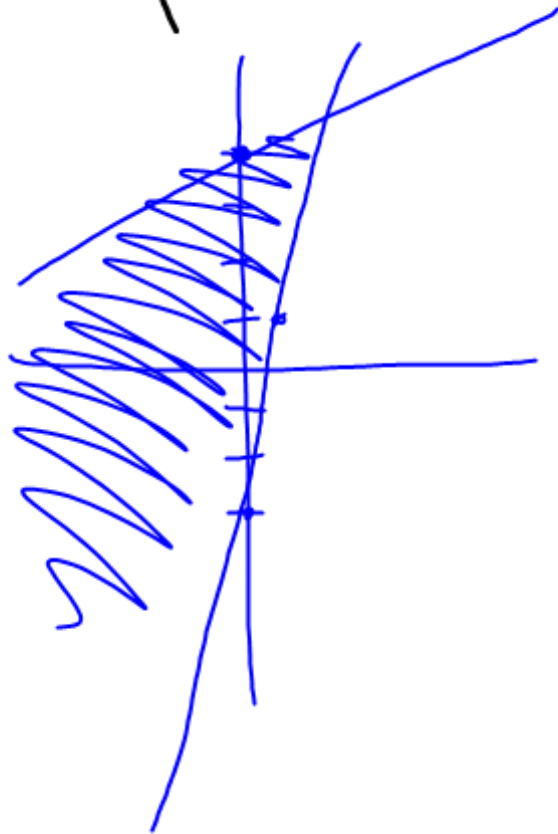
Graph system

$$\begin{cases} y < 3x - 2 \\ y \geq -\frac{2}{3}x + 3 \end{cases}$$

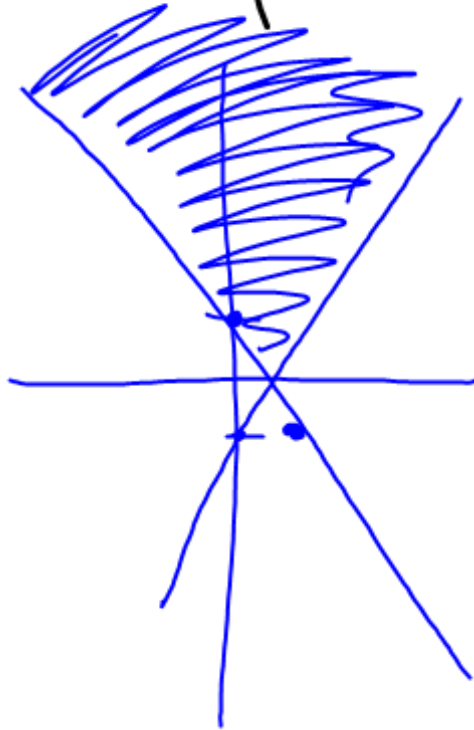


Graph the System

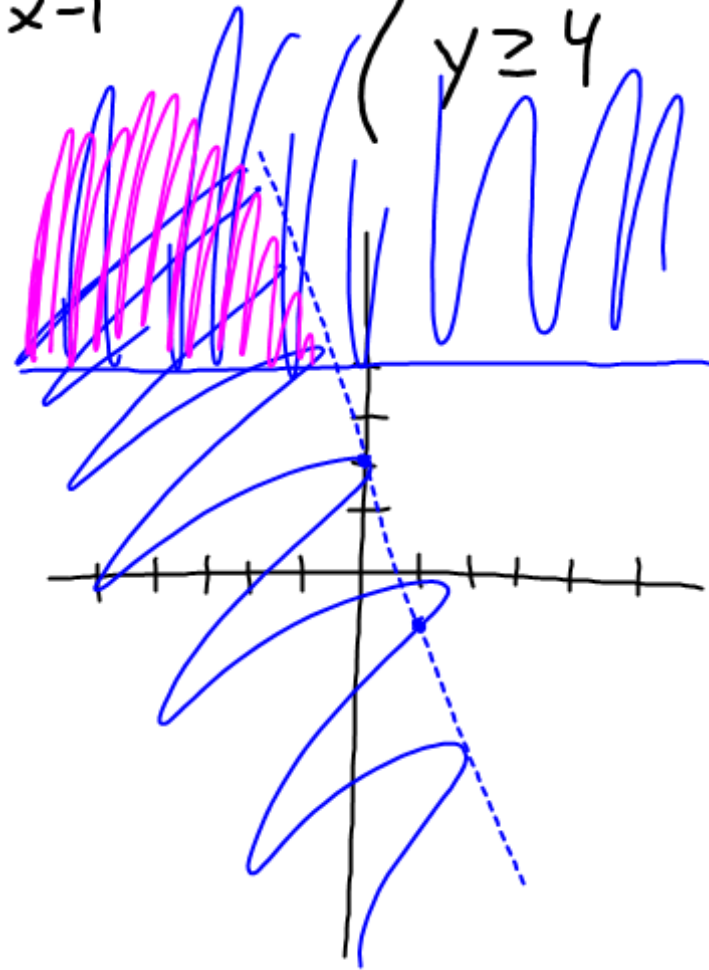
$$\textcircled{1} \begin{cases} y < \frac{1}{2}x + 4 \\ y > 4x - 3 \end{cases}$$



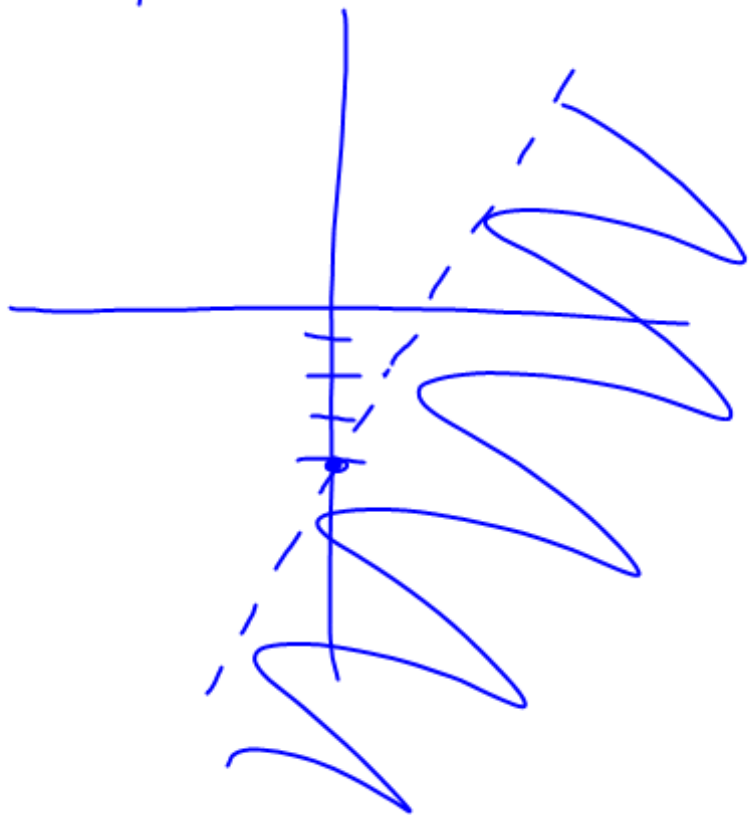
$$\textcircled{2} \begin{cases} y \geq -2x + 1 \\ y \geq 2x - 1 \end{cases}$$



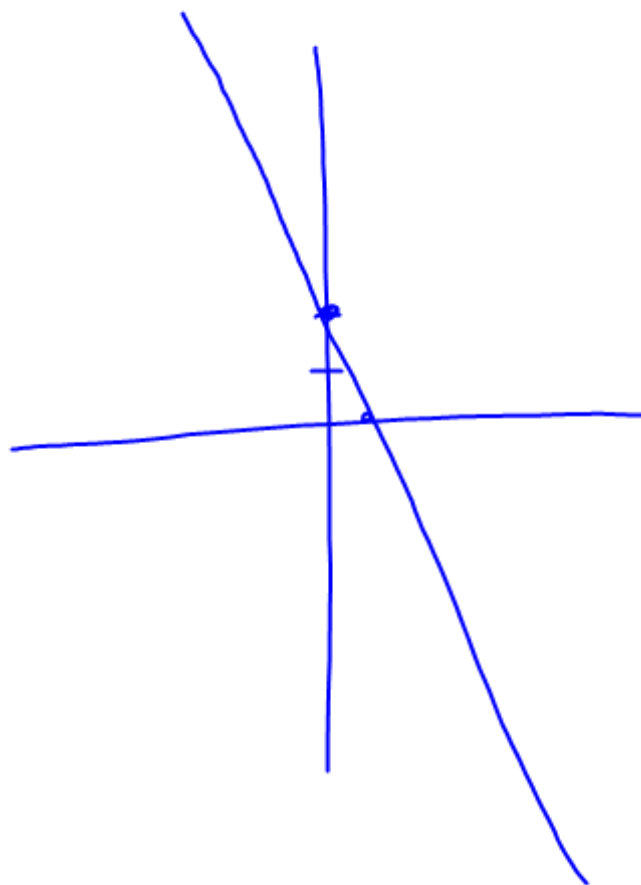
$$\textcircled{3} \begin{cases} y < -3x + 2 \\ y \geq 4 \end{cases}$$



$$y < 2x - 4$$



$$y \geq -\frac{1}{2}x + 2$$



6.7 #1-3

Hw #4-5

- Everything from today
- Yesterday's classwork
- Any make up HW